



Quick Manual to use Bontempi keyboards with the Computer

Bontempi keyboards equipped with Midi or Usb-Midi socket can be connected to a Personal Computer. The keyboard sends and receives information (notes, volumes, etc...) using the MIDI communication protocol.

They can be used with any program to play or record Midi Files (Windows Media Player, Van Basco, Cakewalk, Cubase, Logic, Jazz++, etc.)

Bontempi makes this manual available to its customers who choose to use Windows Media Player and Jazz++ to make a number of important functions simple and intuitive:

- 1) How to connect a Bontempi Keyboard to a computer
- 2) How to reproduce a Midi file with Windows Media Player
- 3) Installation of Jazz++
- 4) How to record, save and listen to a sequence of notes recorded with Jazz++

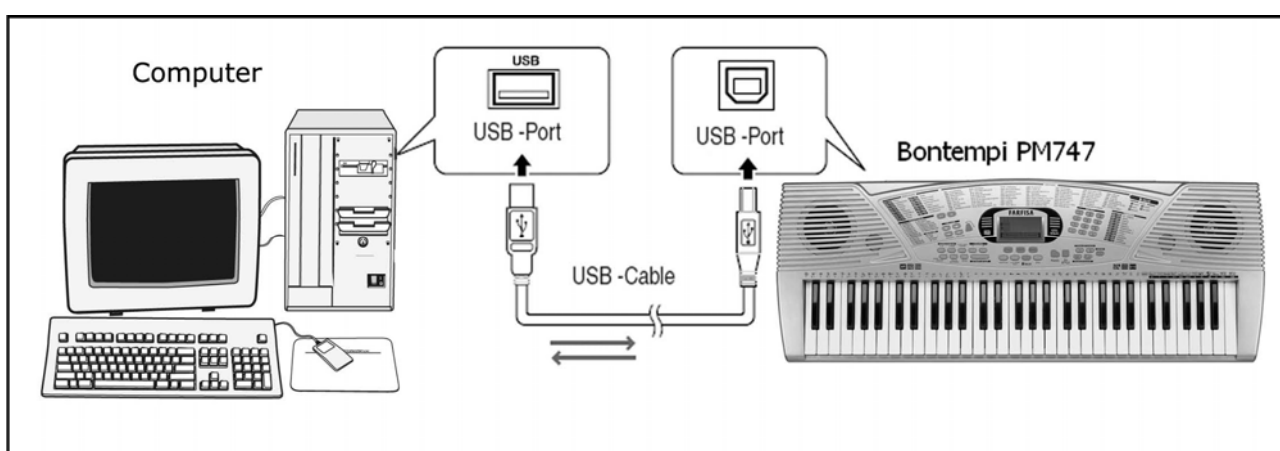
1) CONNECTION OF THE KEYBOARD TO A PERSONAL COMPUTER

What is MIDI?

The acronym MIDI is the abbreviation of "Musical Instrument Digital Interface" and represents a standard for the transmission of data via cables between an electronic musical instrument and a personal computer or another electronic musical instrument.

The General Midi (GM) system

This keyboard adopts the General Midi (GM) system, a standard which allows users to receive or send data in MIDI format to a personal computer or to another keyboard without compatibility problems between musical instruments of different brands. The PM747 keyboard is equipped with a USB-MIDI plug for connection to the personal computer. The connection takes place using the cable supplied as shown in the figure:

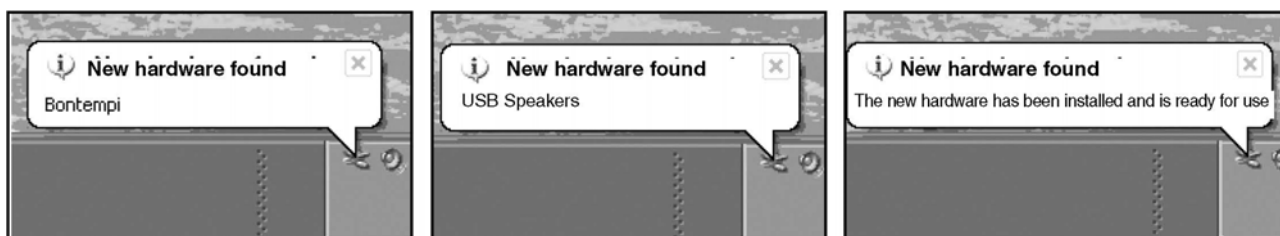


Minimum system requirements

Personal computer with Pentium 3 800Mhz processor equipped with USB plug. Windows XP or later operating system.

Procedure for connection to the computer - Windows XP

Prior to connecting the keyboard, make sure that the computer is switched on and the keyboard switched off. Carry out the connection with the cable supplied. Switch on the instrument. After a few seconds, a series of messages will appear on the computer:



At this point, the keyboard is correctly connected and recognised by the computer. Note: The recognition of the keyboard by the computer takes place during the first connection; in subsequent connection no message will appear. Only the characteristic sound produced by the computer to indicate the insertion of a USB device will be heard.. Attention:

- If the keyboard is not recognised by the computer and a USB device not recognised error message appears, repeat the operation. If the problem persists, check that the minimum requirements are respected.

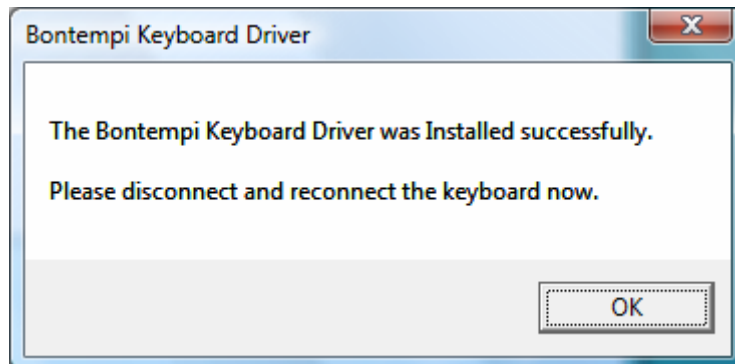
Procedure for connection to the computer - Windows VISTA

To connect the keyboard to PC with Windows Vista it is necessary to install a driver. The installation program is BontempiKeyboardSetup.exe available in the "download area" of website www.bontempi.com. After the download of the installation program please:

- Launch the program BontempiKeyboardSetup.exe. This image will appear:



- Push the button "Install Driver". This new image will appear:

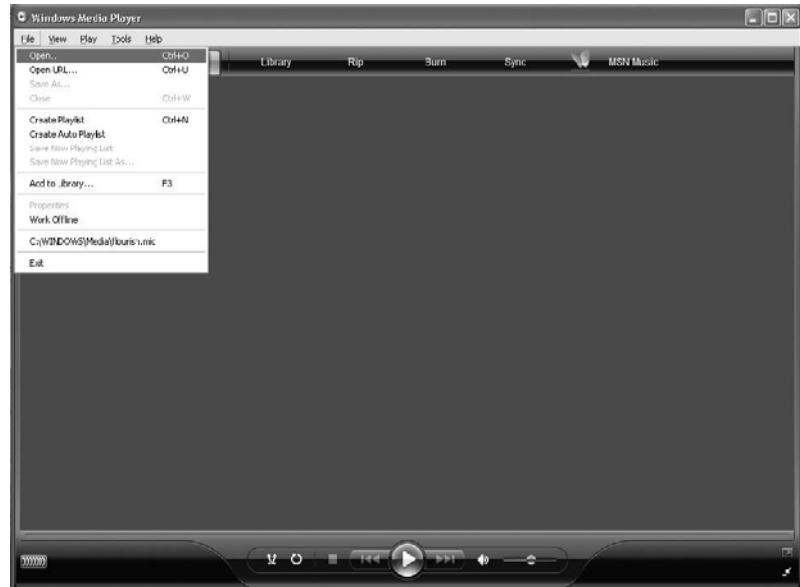


- Push OK. The installation is completed: please disconnect and reconnect the keyboard.

2) Reproduction of a Midi file using Windows Media Player

“Windows Media Player” is included in the Windows packet. It is a program that can read Midi files and send the notes to the Bontempi keyboard connected to the computer. To perform a MIDI file using “Windows Media Player” follow the operations below:

- Open the “Windows Media Player” program
- In the most recent versions the program does not have the “Open file” option. In this case, press CTRL M (Control M). This control shows a classical menu in which the open file option is displayed.



- Select File | Open | filename.mid where “filename.mid can be any MIDI file (as for example the file C:\WINDOWS\Media\flourish.mid, present in Windows XP can be selected) and send it to be executed.
- To listen to the piece, press the Play button situated in the lower centre; Press the Stop button to stop it.
- The keyboard will play the selected sequence.

Usable Programmes

In addition to WINDOWS Media Player, many other computer programmes are commercially available. They offer the possibility to expand the range of functions of the keyboard. Some allow the registration of pieces in Midi format. In other cases, it is possible to register on the computer what is being played on the keyboard. Later, the piece can be replayed, and its musical score can be visualised or printed. It is also possible to correct errors, change sounds, etc. Many of these software programmes are also available on the Internet in Demo or Shareware format.

How to find the Midi Files

On the Internet or in music stores, countless Midi Files can be found for modern or classical music of all kinds. They can be played with the keyboard, or used as an orchestral base to play a melody. Note: The Midi Files available on the Internet have sometimes been made for specific instruments. Some are Midi devices that do not respect the MIDI standard, others have their own specific additional functions. In such cases, it is possible that the musical piece will not be played with the same sounds and effects that are supposed to be used. In any event, the keyboard respects the GM standard, and has many commonly used functions that can be seen on the map on the instrument’s manual.

Attention:

- If the keyboard or the computer freeze, switch off both devices and then switch on the keyboard again.
- Correct operation cannot be guaranteed if the instrument is switched off or the USB cable disconnected while a MIDI application is operational.
- Leave at least 10 seconds between switching off and switching on the keyboard and between the disconnection and connection of the USB cable.
- Make sure that the Midi application is closed prior to switching off the instrument or disconnecting the USB cable. If this should happen, close the Midi application, switch off instrument then switch it back on again and restart the Midi application.

Important note: in Vista the "Midi Mapper" does not exist. In Windows XP "Midi mapper" allows to address Midi data to the Bontempi keyboard or to an other midi destination. For this OS please to use Jazz++ program.

3) How to install JAZZ++

Jazz++ is a Midi sequencer, a program able to record Midi events (notes, volumes etc.) played with the keyboard reproducing them identically.

Installation:

1) download the program from: www.bontempi.com download section.

Two versions are available:

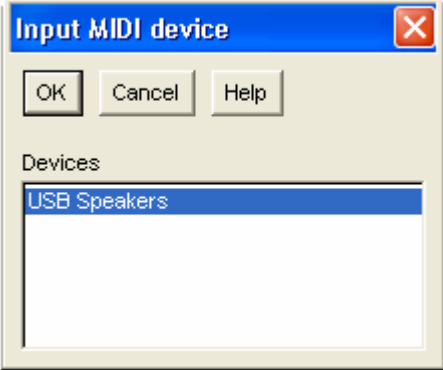
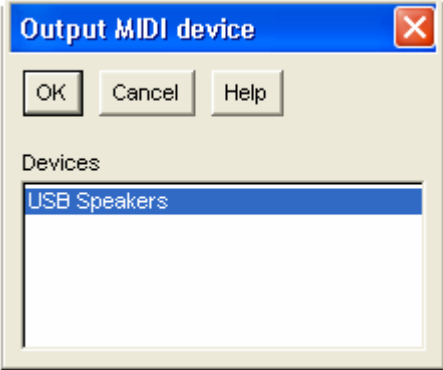
- a "zip" version that needs the Winzip program or Windows XP (".zip" extension) folder compressor
- a self-extraction version (".exe" extension)

2) Decompressing one of the two files a folder called "JAZZ" is created

3) Start the installation program "SETUP.EXE" and follow the simple instructions.

4) How to record, play and listen a sequence recorded with Jazz++

After installation of Jazz++ available on internet on www.bontempi.com it is possible to record a sequence in a very friendly way following the instructions shown below

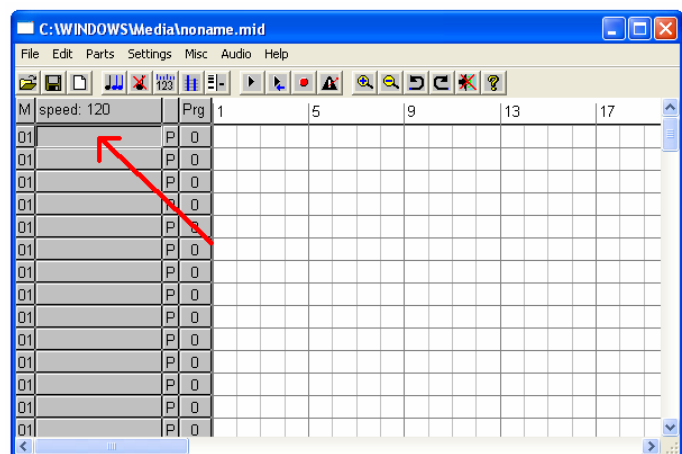
| | |
|--|--|
| <p>Connect the keyboard to the Computer and turn it on</p> <p>Open Jazz++ programm</p> <p>Only for the first execution of JAZZ++ select "USB Speakers" in "Input MIDI device" option</p> |  |
| <p>Only for the first execution of JAZZ++ select "USB Speakers" in "Input MIDI device" option</p> |  |

Only for the first execution of JAZZ++ select "GM" in "Synth type" option



Select File|New

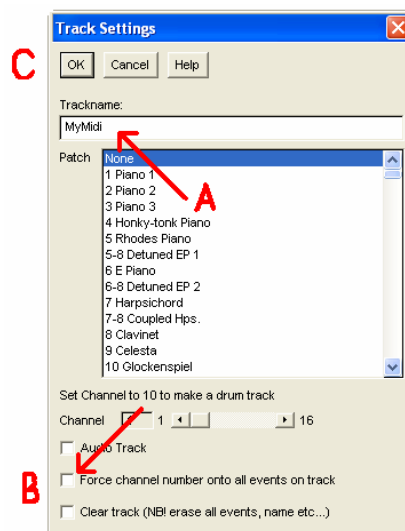
With the left mouse button, press the field indicated by the red arrow



A – Write the name of the track on which to record the notes

B – With the mouse "click" on "Force channel number onto all events on track" box so it remains white

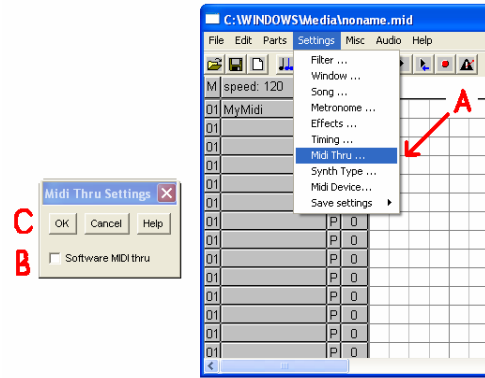
C – Press OK



A – Select “Settings | Midi Thru” and open the window “Midi Thru Setting” [fig. A7]

B – With the mouse “click” on the “Software MIDI Thru” box so it remains white

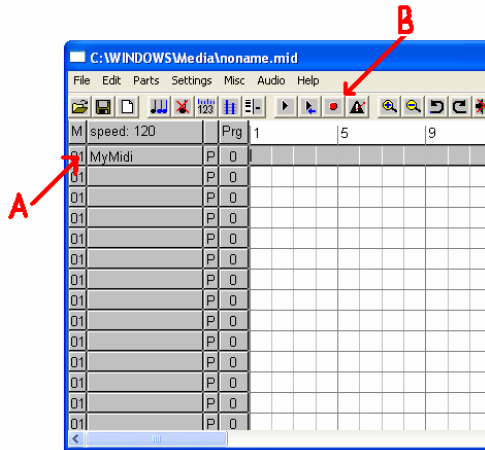
C – Press OK



A – With the mouse press button A to select track where to record

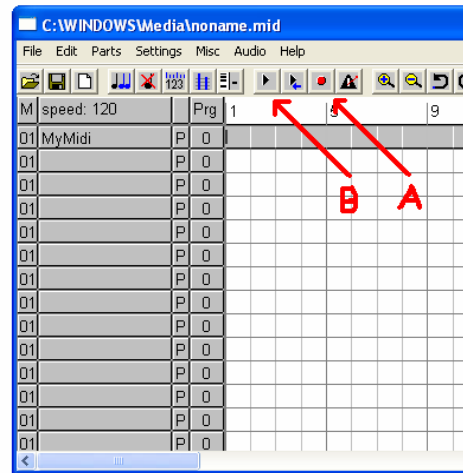
B – Press the record button with the red circle (record)

C – Play some notes on the keyboard, start a style or a song – the program records the notes on the PC memory.



A – To stop the recording press the button with the red circle again (Record)

B – To re-listen to the recorded music press Play indicated by the letter B

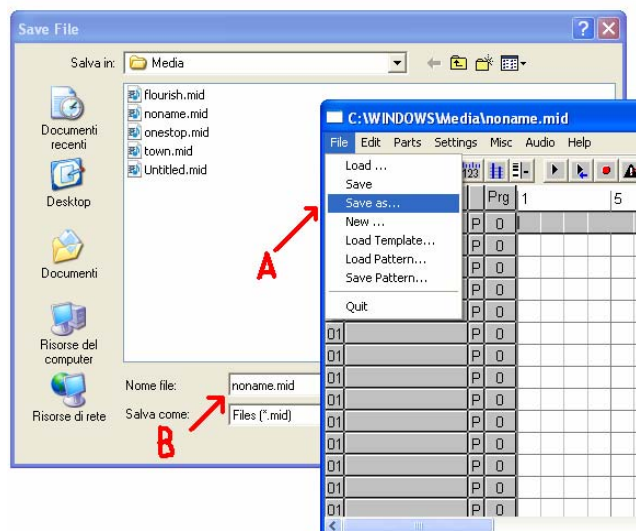


A – To save the recorded sequence select :
File | Save As

B – Write the file name you want to save

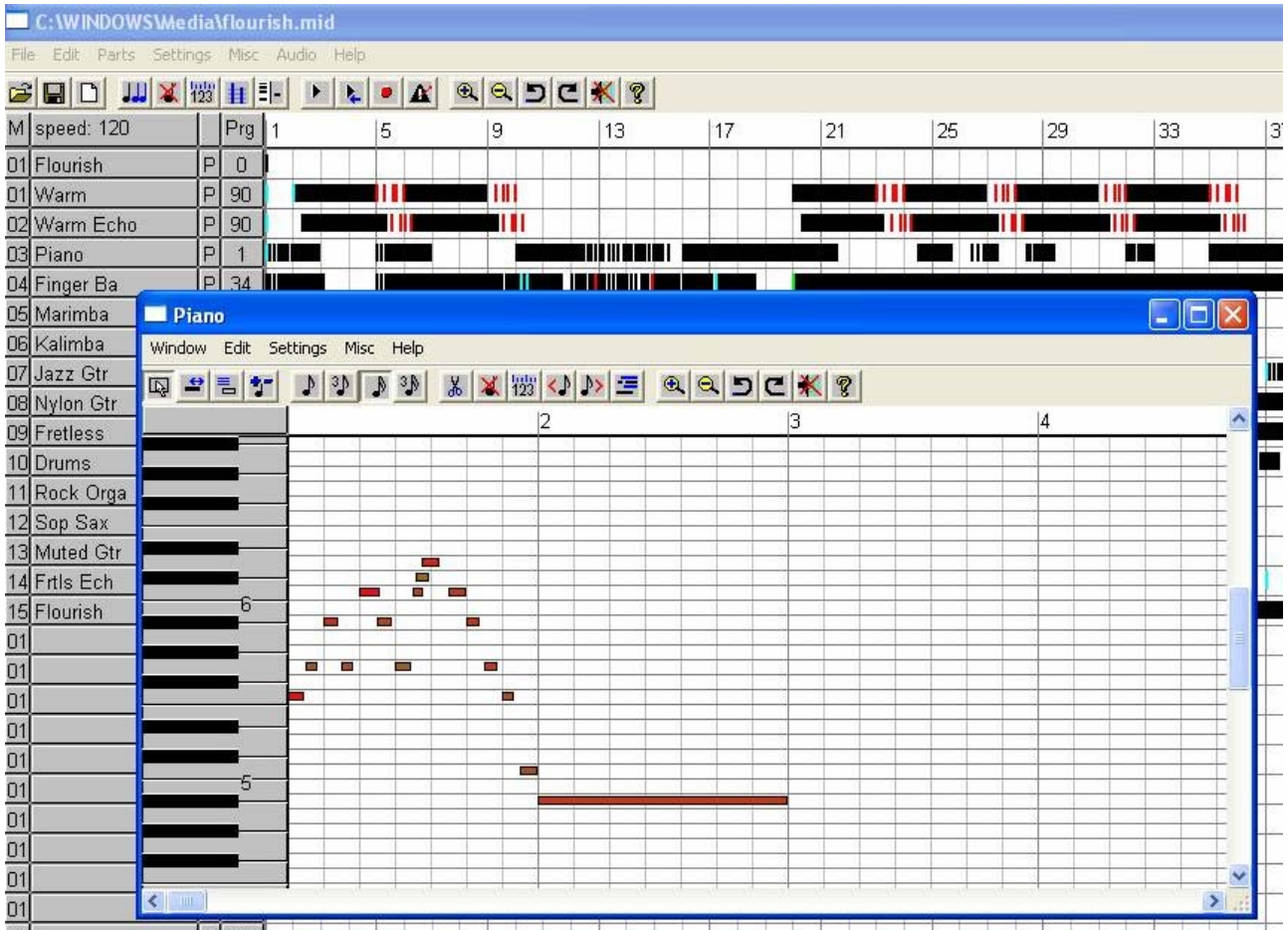
C – Press OK

The file is saved and is available to be re-listened to or changed



How to edit notes and other controls using "Piano roll" window

Click with the right mouse button on a track of the main page of the program (area with discontinuous black lines) and a window appears (piano roll) displaying the notes and their length. On the left part of this window the image of a piano keyboard makes it immediately clear which the notes of the song are.



20 buttons are present in the "piano roll" window (described below from the left to the right) that can considerably modify the content of the song recorded.

1) Buttons to change the operation of the left mouse button:

- * select an area (drawing a rectangle)
- * change length (pressing the desired location of the note with the left mouse button)
- * show dialog box to edit an existing event or to create a new one
- * cut/paste (great for fast note-by-note editing)

2) Buttons to set the most common snap values (pasted events will be placed at nearest 'snap' value, similar to a 'grid' in a graphics paint system) in "quantize" function (see point 3)

- set snap to 1/8 note
- set snap to 1/12 note
- set snap to 1/16 note
- set snap to 1/24 note

3) Buttons to manipulate events:

- Cut
- Delete
- Quantize (shortens or lengthens the note on the basis of resolution required)
- Shift left
- Shift right
- Enable multi track mode (to edit events of other tracks)

4) Buttons for other operations:

- Undo
- Redo
- Panic (MIDI reset) Turn off the notes using Midi
- Help